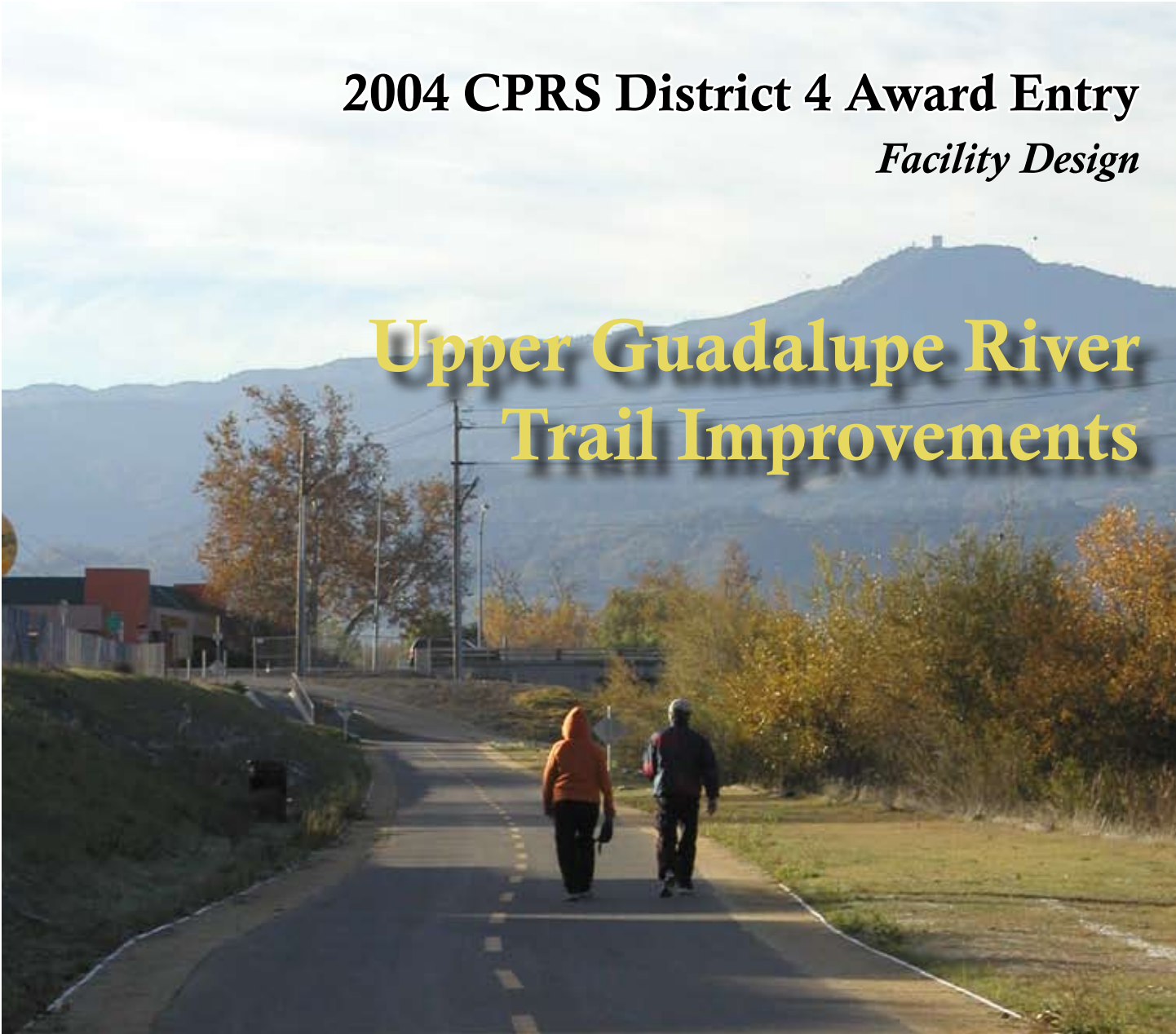


**2004 CPRS District 4 Award Entry**  
*Facility Design*

# Upper Guadalupe River Trail Improvements



**City of San José**

*Department of Public Works,  
City Facilities Architectural Services Division*

*...to enhance the quality of life for the residents of San José*

## Project Description

The City of San José's Department of Parks, Recreation and Neighborhood Services maintains 3,500 acres of parks and offers over 60 programs and services to its residents of all ages and interests. This department continues to support its vision of *Communities of People connected by play, hope, and joy in life* and its mission to *improve the livability of neighborhoods, offer opportunities for individuals to enjoy life, and strengthen communities of people.*

The City of San José, in cooperation with the Santa Clara valley Water District, has recently completed an integrated trail-park project. Specifically, it includes:

- a 220 foot long pedestrian bridge
- 4800 feet of trail along the river
- a 2 acre neighborhood park

A majority of the funding support was received from the State of California Park and Water Bond of 2000. Additional funding came from Measure P, a \$228 million parks bond act supported by the San Jose voters in 2000.

With these projects, San Jose's Department of Public Works delivered almost a mile of new trail within the upper Guadalupe River watershed. The improvements provide critical links in San Jose's existing trail system and bring the City one step closer toward realizing its goal of providing over 100 miles of trails throughout the City.

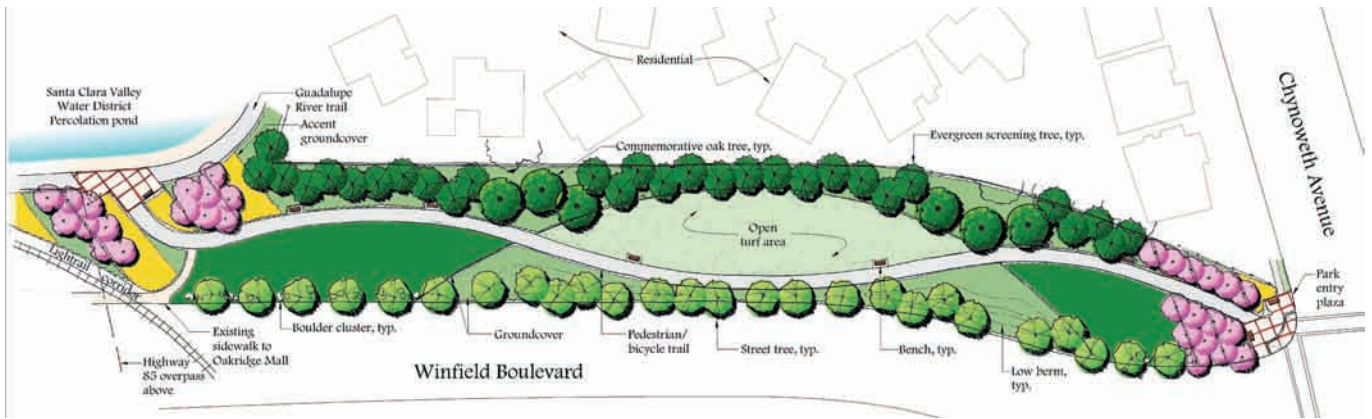
Because streams and rivers are some of the few remaining unobstructed corridors through the City, they provide key alignments for trails. They are also a wonderful place to experience some of the last remaining untouched areas of the City.

Some considerations that were critical to successful implementation of these projects included:

- timing the construction to minimize impacts on wildlife, and
- creating new wetlands to offset losses.

Of special note is the collaboration that occurred between the City and the Santa Clara Water Valley District. The District had previously prepared plans for increasing the flood capacity of the Guadalupe River which would not have had any impact on the new trail. The Corp of Engineers subsequently reviewed the plans and determined that the District's flood control improvements needed to be expanded to include the excavation of the existing service road. This road was the very same facility that the City hoped to use for installation of the new trail! With a cooperative mindset, the project turned into a classic "win/win" when the City and the District combined the projects. So far, the only flood that the trail has seen is the "flood" of users that have been out there ever since the ribbon cutting.

# Project Images - Upper Guadalupe River Trail Improvements



(001GuadalupeparkplanFinal.jpg) Trail links to other trail network and provides green, vegetated corridor.



(002GuadalupeTrailBridge.jpg) Scale and materials of bridge blend with existing context and reflects the rays of sunset.



(003GuadalupeTrailBridge2.jpg) Bridge construction provides for span of the riparian corridor and adequate width for trail users.



(004GuadalupeTrailBridge3.jpg) New trail provides links for local residents eager for an outdoor experience.

\*Digital images are provided on the attached CD-ROM

## Project Images - *Upper Guadalupe River Trail Improvements*



(005CilkerParkTrail.jpg) Planting buffers and trail amenities, including benches, provide a pleasant corridor.



(006CilkerParkTrail2.jpg) Curving trail pathway and lawn, provide visual interest.

\*Digital images are provided on the attached CD-ROM