



Guadalupe Creek Trail

- Paved Trail
- - - Gravel Trail
- . . . Unpaved Trail

- Connecting Trails**
- Paved Trail
- - - Gravel Trail
- . . . Unpaved Trail

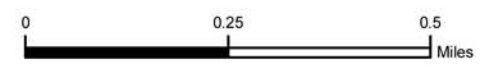
- GUC02 Trail Segment Number
- 1.1 mi. Trail Distance in Miles
- Retail
- Parking
- Restroom
- Emergency Call Box



Almaden Preparatory School
 Beacon School
 Singletree Way

Guadalupe Creek

July 2009



Copyright City of San Jose, CA

map 1028