



# Proposed Noble Dog Park

*Master Planning - Community Meeting*

*February 1, 2012*

# Agenda – Proposed Noble Dog Park

- **Introductions**
- **Welcome by Councilmember Chu**
- **Background - Greenprint Overview**
- **Location Context**
- **Dog Park Elements**
- **Concept Plans**
- **Next Steps**
- **Discussion**



# Introductions

- **Councilmember Kansen Chu**
- **Dave Mitchell, Capital Parks Manager**
- **Cindy Rebhan, Operations Parks Manager**
- **Stephanie Fong, CD 4 District Director**

# Welcome Remarks

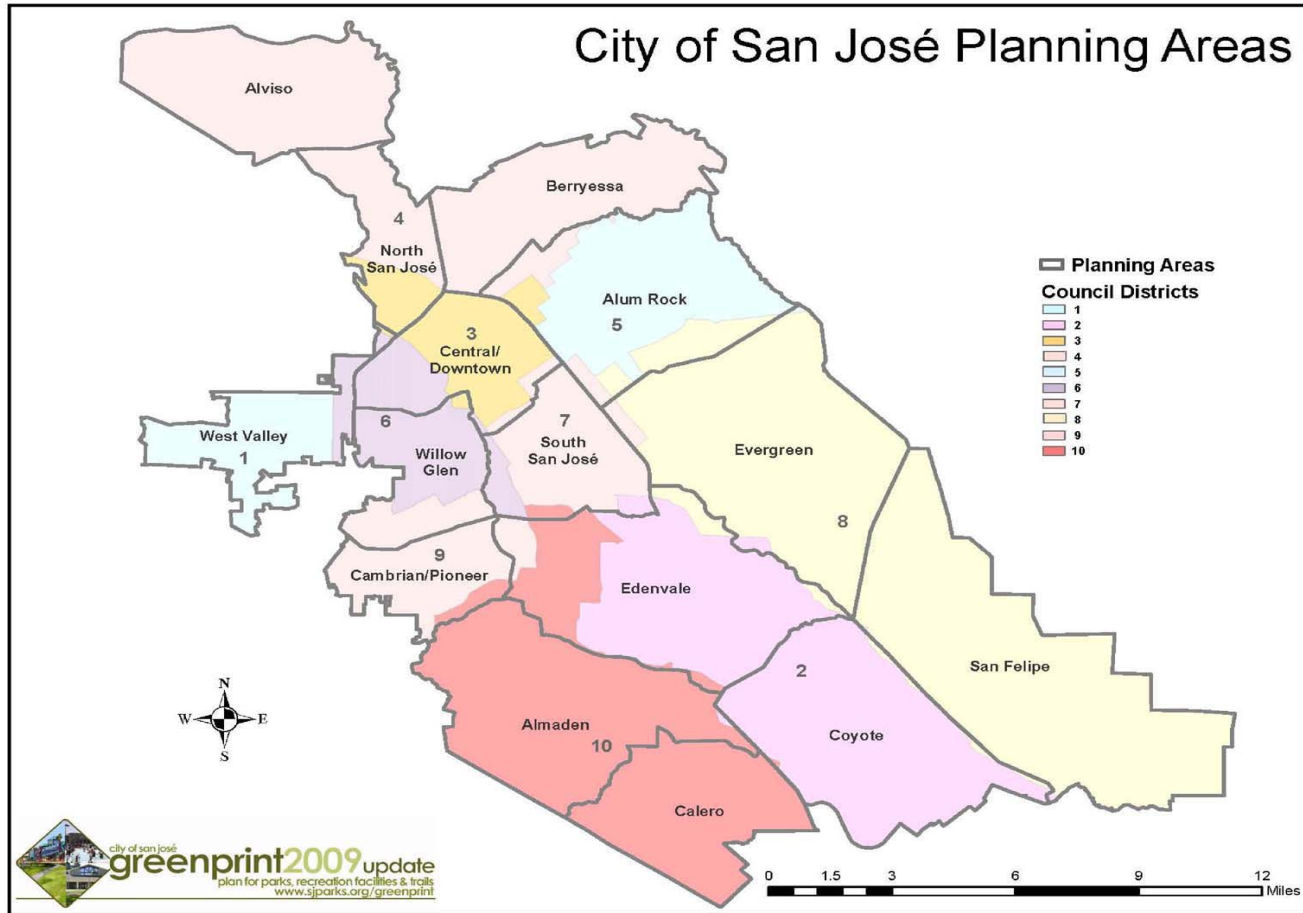
## **Councilmember Kansen Chu** **Council District 4**

# Background

city of san josé  
**greenprint2009** update  
plan for parks, recreation facilities & trails



# Background



# Balance Park Facilities for Planning Area



# City Dog Parks



- 1 – CD 9 – Butcher Dog Park**
- 2 – CD 3 – Delmas Dog Park**
- 3 – CD 10 – Fontana Dog Park**
- 4 – CD 10 – Miyuki Dog Park**
- 5 – CD 3 – Olinder Dog Park**
- 6 – CD 2 – Raleigh Linear Dog Park**
- 7 – CD 3 – Ryland Dog Park**
- 8 – CD 1 – Saratoga Creek Dog Park**
- 9 – CD 3 – Watson Dog Park**



# Other Dog Parks



**Milpitas – Ed Levin County Dog Park**

**Santa Clara – Reed Street Dog Park**

**Sunnyvale – Las Palmas Park & Dog Park**

**San José – Hellyer County Park Off Leash Area**

# Background



## Why create a Dog Park?

- Provide a space where dogs may be legally unleashed
- Provide a social gathering space for dog guardians
- Reduce dog waste in the City's parks
- Reduce conflicts between dogs and other park users
- Provide local access to Facilities per the Greenprint

# Background



## Where to create a Dog Park?

- **On City land not reserved for future programmed use**
- **Within view of a street for surveillance and access**
- **Does not conflict with other parks areas or activities**
- **Near a potable water source**
- **Parking is available – Street and/or Park Site**

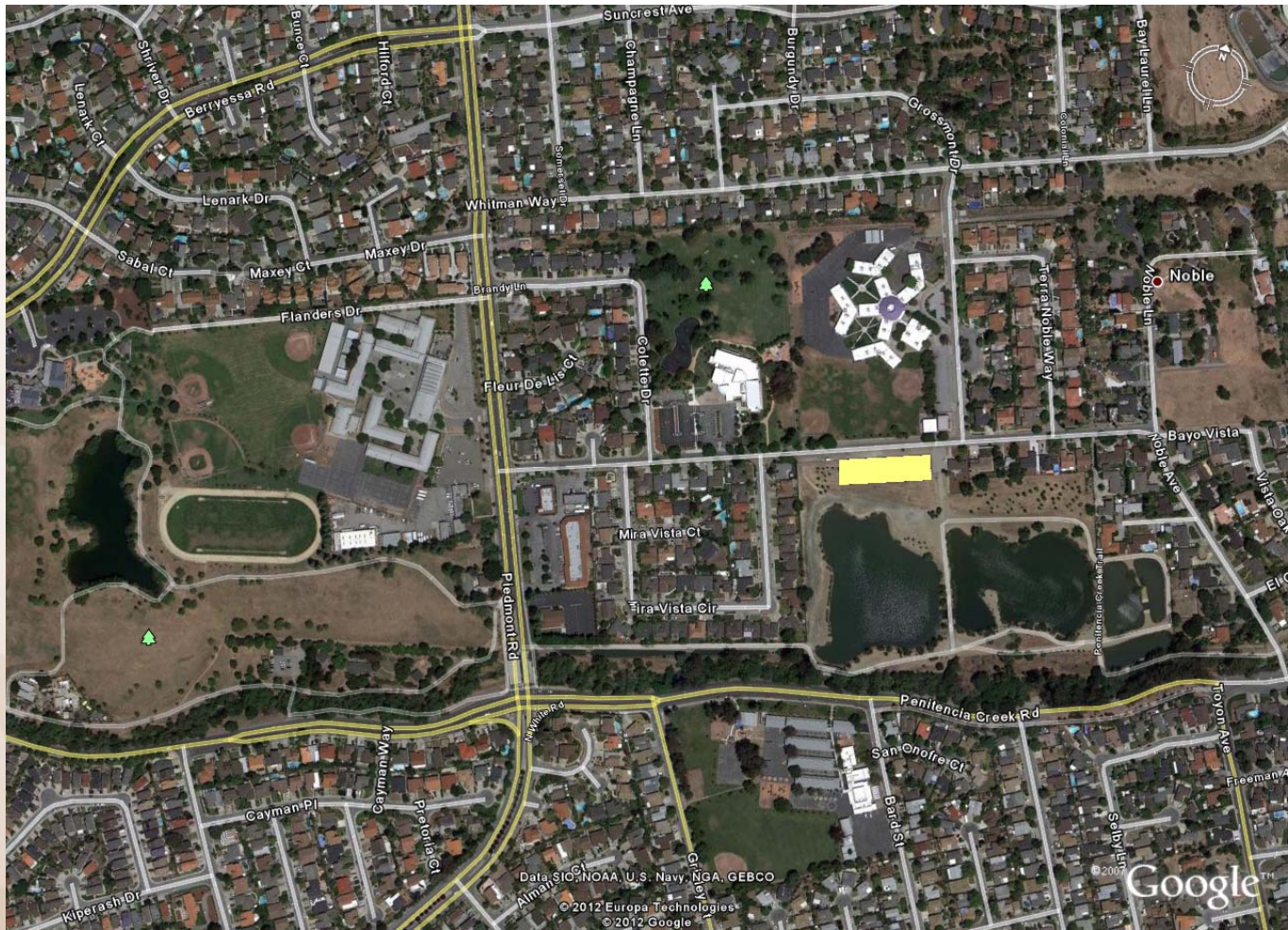
# Background



## When to create a Dog Park?

- **Aligns with the City's Greenprint goals**
- **Community support for the Dog Park**
- **Funding is available for:**
  - **Design**
  - **Construction**
  - **Operations and Maintenance**

# Location Context



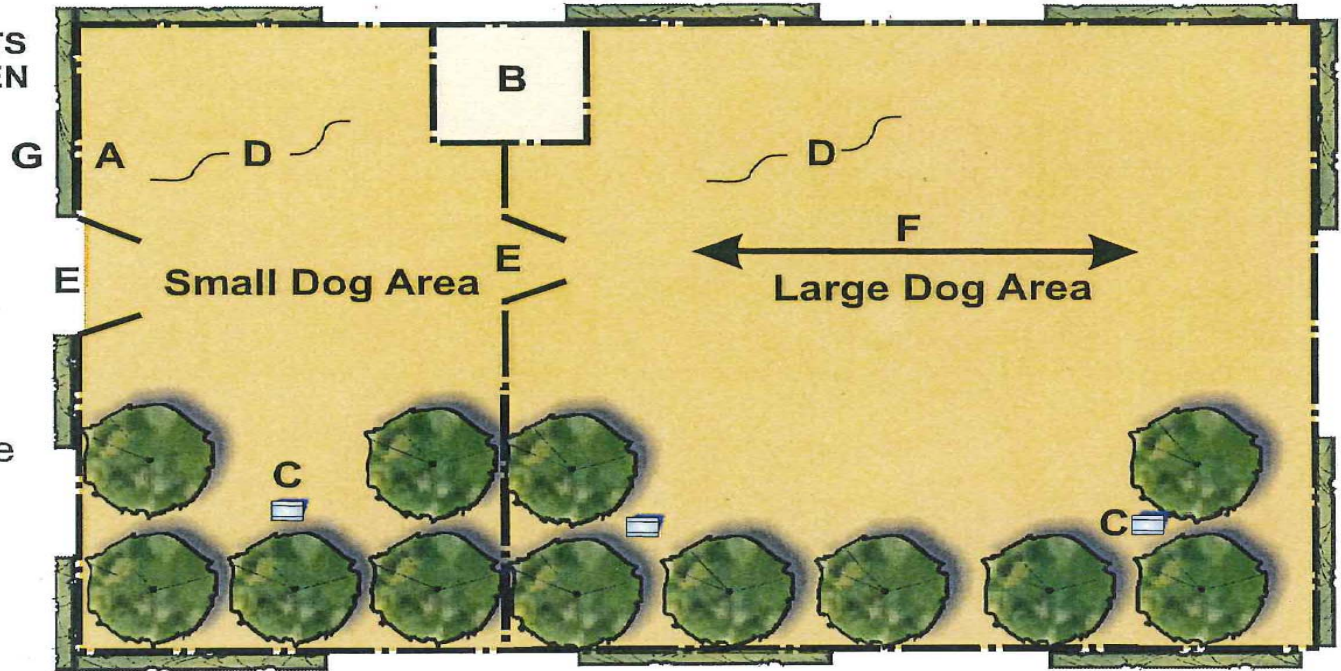
# Location Context





**REQUIRED ELEMENTS  
FOR PARKS BETWEEN  
1/4 AND 3/4 ACRES  
IN SIZE**

- A** Perimeter Fence
- B** Unleashing  
Entry Area
- C** Furnishings
- D** Surfacing
- E** Maintenance Gate
- F** Area to Toss Ball
- G** Planting



**PLAN VIEW OF TYPICAL MEDIUM SIZED FACILITY - Not To Scale**

# Typical Dog Park Elements

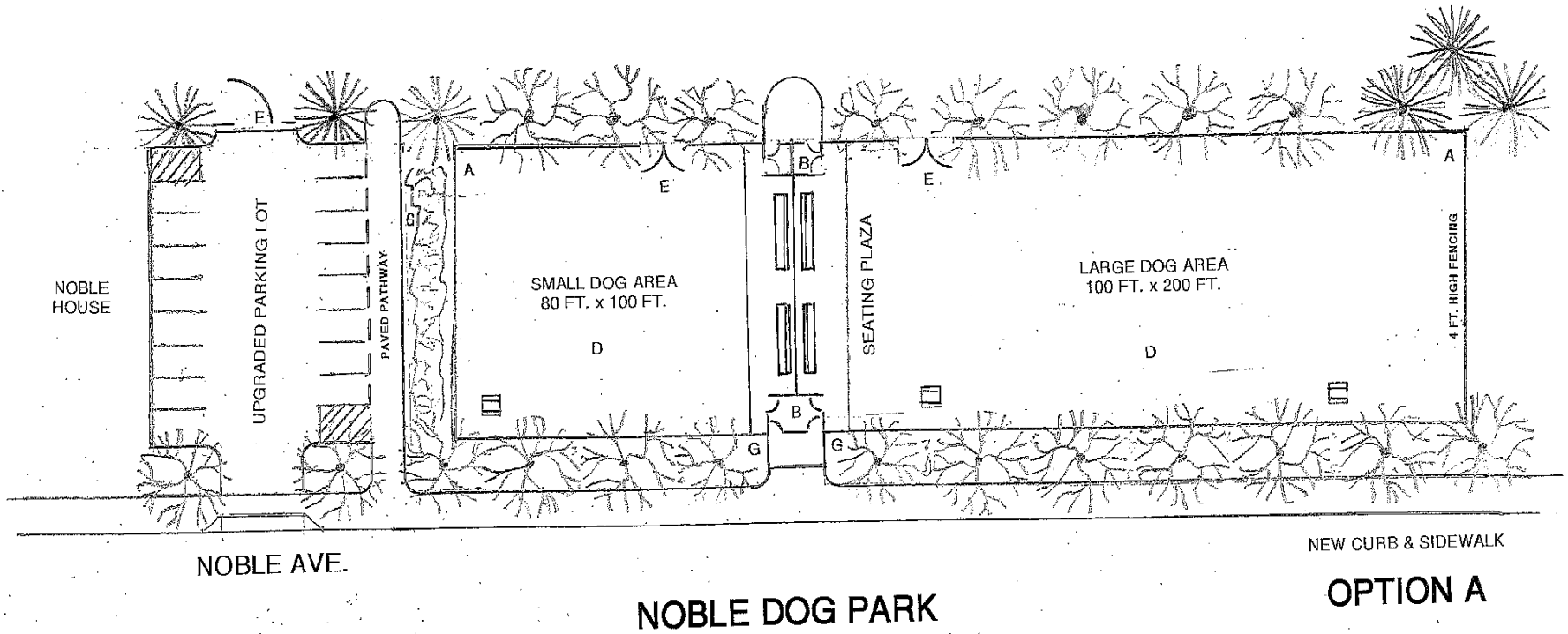
# Fencing



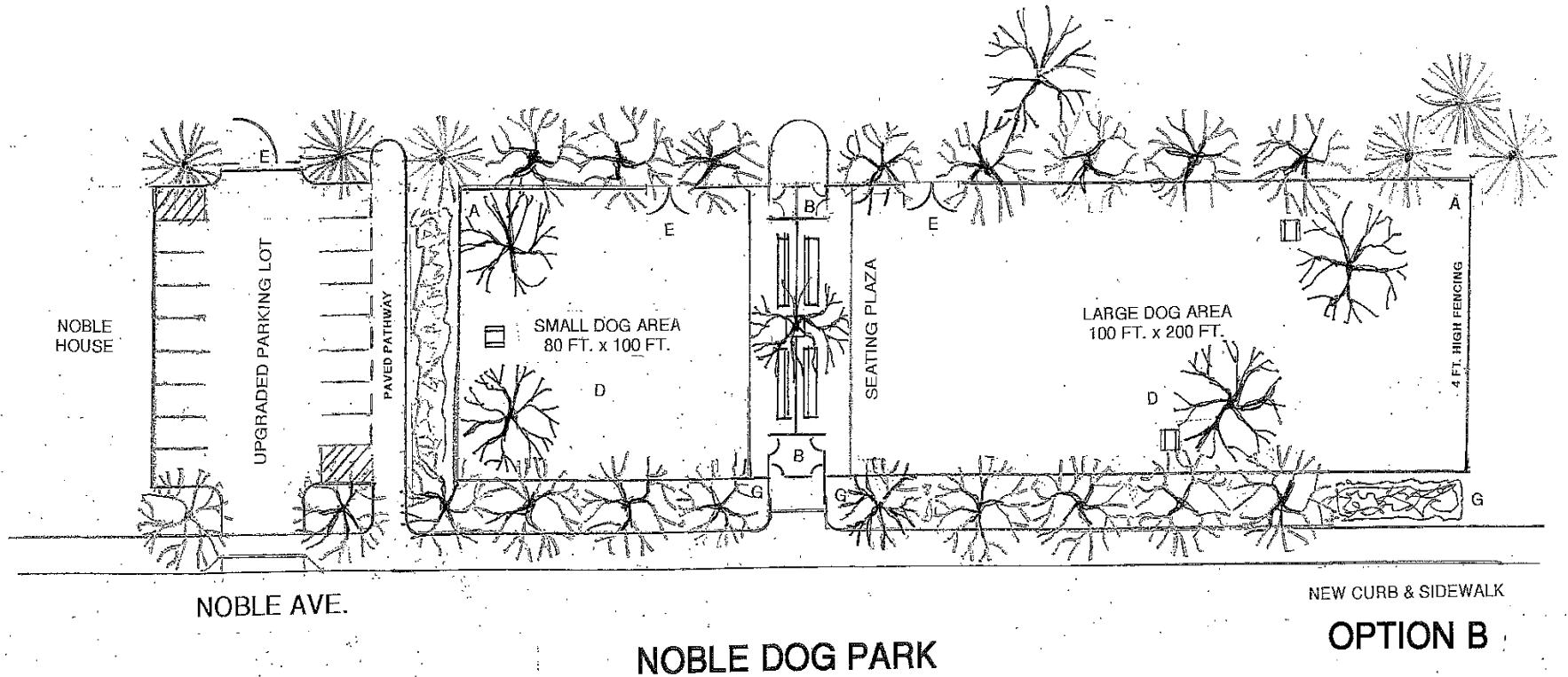
# Furnishings



# Concept Plan



# Concept Plan



# Next Steps



## Master Plan Process

- **Community Meetings**
- **Define a Concept Plan**
- **Master Plan Document & Environmental Review**
- **Naming of the Dog Park Facility**
- **Parks and Recreation Commission Hearing(s)**
- **City Council approval of the Dog Park Master Plan and Facility Name**

# Next Steps



## Construction Process

- **Prepare Plans and Specifications per Master Plan**
- **Bid Out the Documents for Dog Park Project**
- **Open Bids and Award a Construction Contract**
- **Monitor Construction Work**
- **Final Construction Acceptance**
- **Open for Public Use of the New Dog Park**

# Discussion



**Dave Mitchell – PRNS**  
**408-793-5528**

**dave.mitchell@sanjoseca.gov**

# Proposed Dog Park Community Remarks



- 1) What type of surfacing material?
- 2) Any water quality concerns regarding the percolation ponds?
- 3) Will dogs be allowed to swim in the percolation ponds?
- 4) Will the site have a public restroom?
- 5) Will the City consider a public restroom in the future?
- 6) What is the timeline for this project and future meetings?
- 7) What is the distinction between small and large dogs?
- 8) Will people be drawn into the community to use the dog park?
- 9) The dog park will need to provide additional parking.
- 10) Any environmental concerns regarding this location?

# Proposed Dog Park Community Remarks



- 11) Will the dog park be lighted?
- 12) Will the surfacing material be irrigated?
- 13) Who will maintain the Dog Park? How often?
- 14) Enforcement of the dog park regulations?
- 15) Shade needs to be provided beyond the proposed trees.
- 16) What are the street frontage improvements?
- 17) Will drinking fountains be provided?
- 18) Hours of parking on street and in the lot should be limited.
- 19) What are the hours of use for the dog park?
- 20) What is cost to maintain the dog park?
- 21) Benches, picnic tables and doggie bags should be provided.

# Proposed Dog Park


## Community Remarks



- 22) Can the large dog area be larger?
- 23) Can the community donate toward the dog park?
- 24) Noble Avenue is heavily used by cyclists and joggers.
- 25) Keep parking on the dog park side of the street.
- 26) Existing parking lot needs to be larger.


## Conclusions

No major oppositions from the group for the dog park. Community would like more details regarding the park's design elements and parking solution.



*Thank you for attending the*  
**Proposed Noble Dog Park**

*Master Planning - Community Meeting*



*February 1, 2012*  
*Berryessa Branch Library*  
*Community Room*